

INTENSIVE ENGLISH PROGRAM

- » High-impact curriculum, face-to-face instruction
- » 10 academic levels
- » One level is 8 weeks of classes (Two levels per academic semester)
- » Students who complete Level 8 do not need to take TOEFL/IELTS for Admissions



INTENSIVE **ENGLISH PROGRAM**

10 Academic Levels – Online Placement Test to determine Student Level

	<i>MONDAY</i>	<i>TUESDAY</i>	<i>WEDNESDAY</i>	<i>THURSDAY</i>	<i>FRIDAY</i>
<i>9:00 – 9:50</i>	Grammar	Grammar	Grammar	Grammar	Grammar
<i>10:00 – 10:50</i>	Writing	Writing	Writing	Writing	Writing
<i>11:00 – 11:50</i>	Reading	Reading	Reading	Reading	Reading
<i>12:00 – 12:50</i>	Communication Skills	Communication Skills	Communication Skills	Communication Skills	Events
<i>1:00 – 2:00</i>	Lunch	Lunch	Lunch	Lunch	Events
<i>2:00 – 2:50</i>	Elective	Elective	Elective	Elective	Events



WHAT IS NEEDED TO APPLY FOR THE IEP?

- » Copy of **HIGH SCHOOL DIPLOMA**
- » Student must be at least 16 years old
- » Copy of **PASSPORT**
- » Supporting Financial Documents
- » Certification of Finances Form
- » \$120 application fee

One level of IEP
(8 weeks)

Two levels of IEP
(16 weeks)

\$2,657

\$5,314

**Pricing subject to change. 2023-2024 pricing above.*

PRICING **INTENSIVE ENGLISH PROGRAM**

Amenities INCLUDED

Tuition (including books and materials)

600+ Student Clubs and Intermural Teams to Join

UCF Sporting Events

Use of library, gym, campus facilities

On-Campus Health Services

Technology Access

Free UCF Shuttle Bus

UCF ID Card

Not Included

Housing

Health Insurance

SEVIS fee/Travel

Meal plan

[https://global.ucf.edu/
programs/intensive-
english-program/](https://global.ucf.edu/programs/intensive-english-program/)

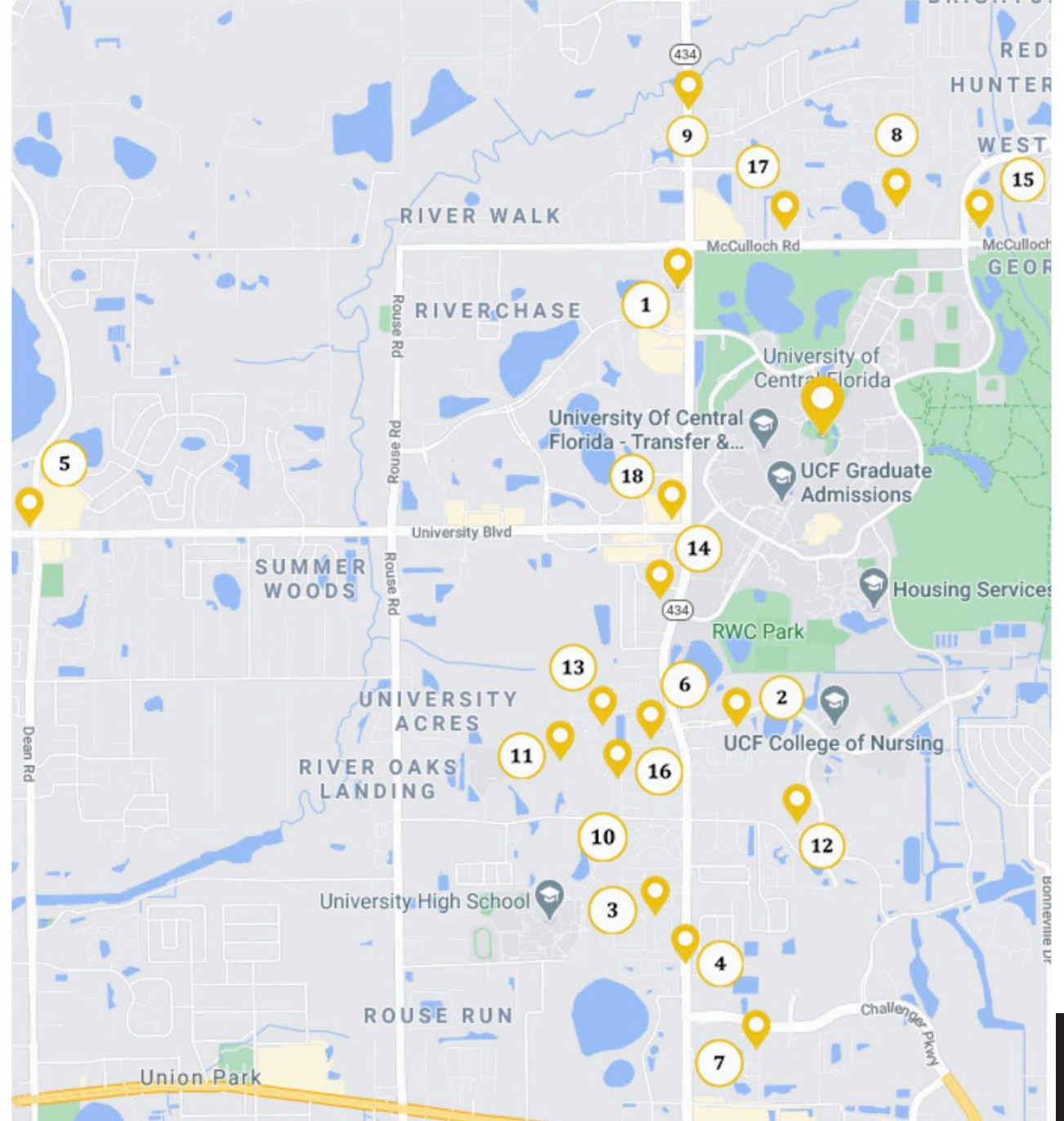
ESTIMATED EXPENSES

<https://global.ucf.edu/prospective/>

	Intensive English Program (IEP)	GAA Prep	GAA III	GAA II and GAA UI
Tuition and Fees	\$5,254 (2 sessions)	\$5,254 (1 semester)	\$25,500 (3 semesters)	\$17,000(2 semesters)
Living Expenses	\$4,867 (2 sessions)	\$4,867 (1 semester)	\$15,804 (per year)	\$15,804 (per year)
Mandatory Health Insurance	\$1,265 (2 sessions)	\$1,265 (1 semester)	\$3,320 (per year)	\$3,320 (per year)
TOTAL	\$11,386 (2 sessions)	\$11,386 (1 semester)	\$44,624 (per year)	\$36,124 (per year)
Dependent (if applicable)	\$2,000 per dependent (2 sessions)	\$2,000 per dependent (1 semester)	\$3,000 per dependent (per year)	\$3,000 per dependent (per year)

Off-Campus Housing Options

- » *Housing is student's responsibility to arrange.*
- » *No on-campus housing options for IEP at this time.*
- » Varied prices/types of accommodation off-campus
- » Check the distance
- » Check the lease length
- » Call or check online for availability



CALENDAR

INTENSIVE ENGLISH PROGRAM

6 intakes, year-round:

- » Fall Session 1 (8 weeks)
- » Fall Session 2 (8 weeks)
- » Spring Session 1 (8 weeks)
- » Spring Session 2 (8 weeks)
- » Summer Session 1 (6 weeks)
- » Summer Session 2 (6 weeks)

For specific dates, please see the Academic Calendar on our Website:

<https://global.ucf.edu/programs/calendar-iep/>

Spring 2023 Session 1	Academic Calendar
Dec 16	Application Deadline
Jan 5-6	Orientation
Jan 9	Classes Begin
Jan 9-13	Late Registration
Jan 13	Last Day to Drop Request Full Refund
Jan 16	Martin Luther King Jr. Day (No Classes)
Jan 20	Payment Deadline
Feb 10	Withdrawal Deadline
Feb 27- Mar 1	Finals
Mar 1	Classes End

ONE SESSION **INTENSIVE ENGLISH PROGRAM**

[https://global.ucf.edu/
programs/calendar-
iep/](https://global.ucf.edu/programs/calendar-iep/)

MEET OUR TEAM

UCF GLOBAL

Support for Students while on Campus

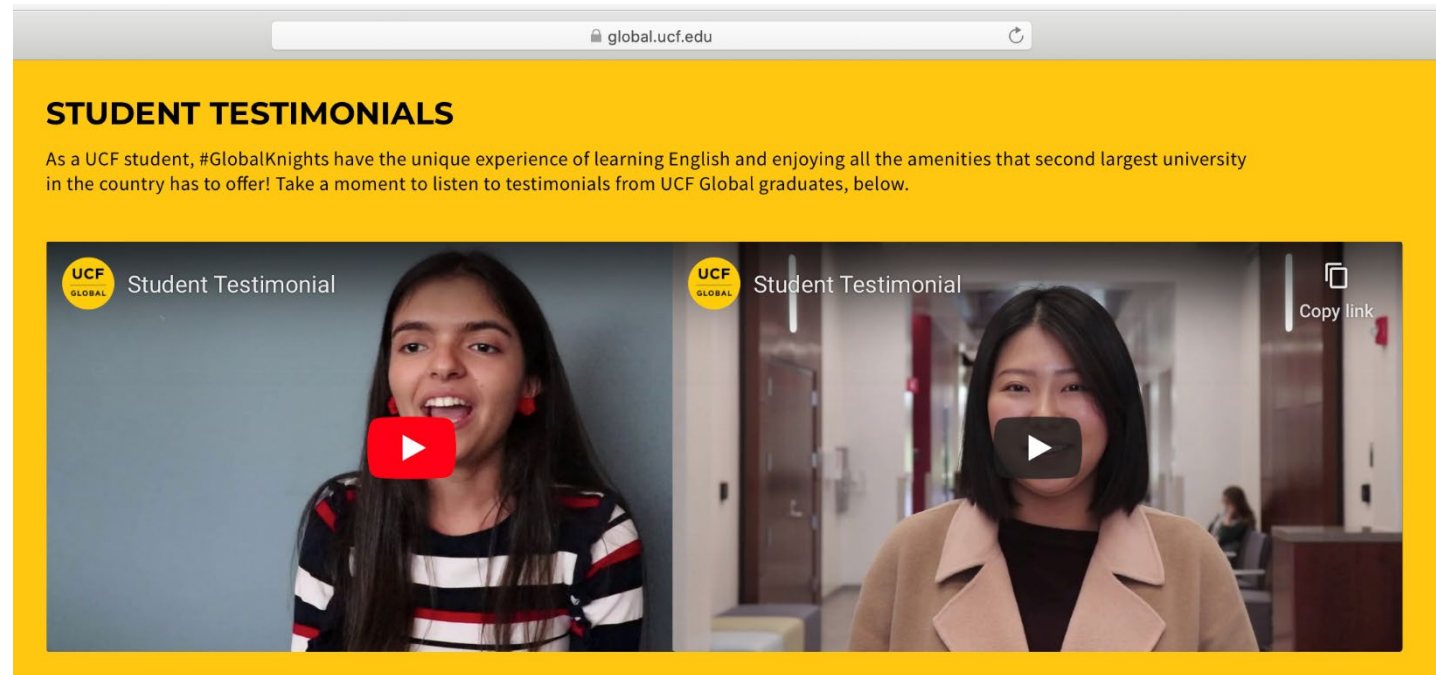
- » Faculty Team
- » Academic Advisors
- » Immigration Advising Team
- » Employment & Taxation Team
- » Global Experts Team
- » International Recruitment Liaison

<https://global.ucf.edu/aboutus/meet-our-team/>



INTENSIVE ENGLISH PROGRAM PROMOTIONAL MATERIALS

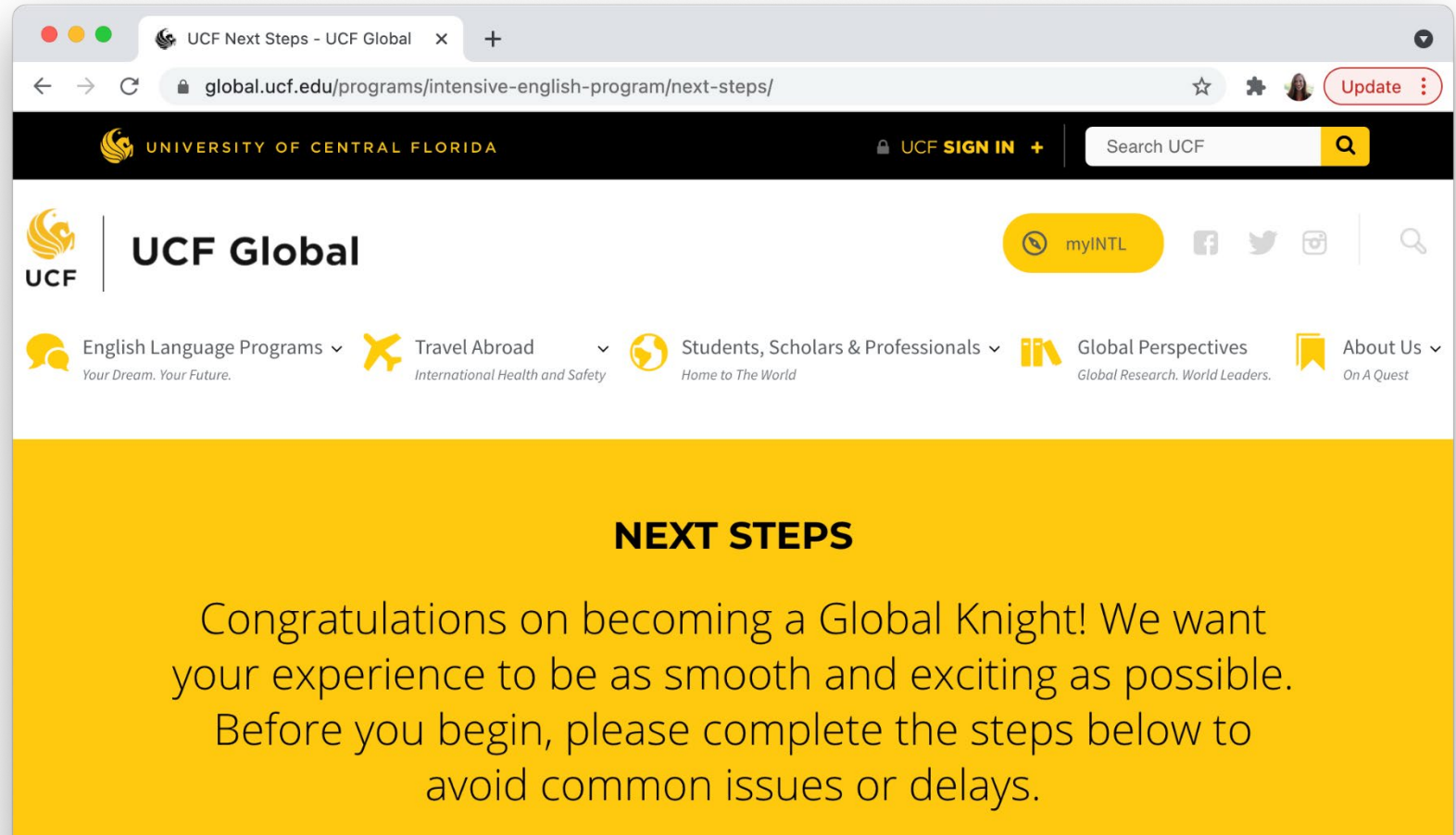
- » PDF IEP Flyer
- » IEP website:
<https://global.ucf.edu/programs/intensive-english-program/>
- » Full Description of Curriculum:
<https://global.ucf.edu/programs/curriculum/>
- » Student Testimonial Videos on Website



INTENSIVE ENGLISH PROGRAM

NEXT STEPS

- » *After Acceptance Letter and I-20 packet sent*
- » *Set up NID & Email*
- » *Online Placement Test*
- » *Orientation Reminder*
- » **Students can contact ucfglobal@ucf.edu for assistance at any step**



The screenshot shows a web browser window with the URL global.ucf.edu/programs/intensive-english-program/next-steps/. The page header includes the University of Central Florida logo, the text "UNIVERSITY OF CENTRAL FLORIDA", a "UCF SIGN IN" button, and a search bar. The main navigation bar features the UCF Global logo, a "myINTL" button, and social media icons. Below the navigation bar, there are five menu items: "English Language Programs" (with tagline "Your Dream. Your Future."), "Travel Abroad" (with tagline "International Health and Safety"), "Students, Scholars & Professionals" (with tagline "Home to The World"), "Global Perspectives" (with tagline "Global Research. World Leaders."), and "About Us" (with tagline "On A Quest"). The main content area has a yellow background with the heading "NEXT STEPS" and the text: "Congratulations on becoming a Global Knight! We want your experience to be as smooth and exciting as possible. Before you begin, please complete the steps below to avoid common issues or delays."

Orientation Schedule

- » 3 days (Wed-Fri) before classes begin
- » Immigration Document Intake
- » Health Insurance
- » Immunization Forms

-ORIENTATION-

UCF Global English Programs - Orientation & Registration
UCF Global Building

DAY 1

- 9:00 AM** Welcome Check-In
Document Intake
Sign-in and submit original immigration documents including passport, I-20 form, dependent documents
Breakfast
Get to know your fellow students
- 10:00 AM** Academic Presentation
- 11:00 AM** Health Center Document Review Lounge
- 1:00 PM** Faculty Welcome Presentation
- 1:30 PM** Recap of the Day
Lunch

DAY 2

- 8:30 AM** Check-In
Breakfast
- 9:00 AM** Immigration Presentation
- 10:00 AM** Placement Test
Lounge
Health Center
Card Services
Campus Tour
- 12:00PM** Undergraduate Track Presentation
Safety and Security Presentation
- 1:00 PM** Recap of the Day
Lunch

DAY 3

- By Appointment** Technology Orientation
Registration
Book Store



CHARGE ON!
DREAM BIG!
